



# AXIAL GUIDED CHECK VALVES (SILENT CHECK VALVE) - C300



## SPECIFICATIONS

DN mm	DN 40 - 350
DN inch	1 1/2 - 14"
Temperature	EPDM 0°C to 90°C
Pressure range	10/16
Connection	Flanges - EN 1092-2
Body material	Cast iron EN-GJL 250 / GG25 / Epoxy coating 250 microns
Application	Clear water, fire protection networks, pumping stations
Tests Standard	Tightness test according to EN 12266-1
Design Standard	EN 12334, ASME B16.1, ASME B16.45
Options	Other specifications on request

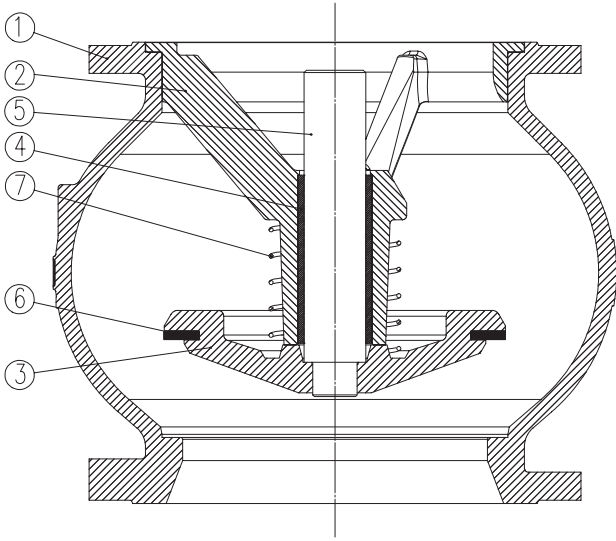
## ADVANTAGES

- Compact and non-water hammer generating, it suits a wide range of applications.
- Can be installed in any position.
- Optimized hydraulic profile ensuring low pressure losses.
- Excellent sealing ensured by the closure system.
- Sealing provided by a flat EPDM gasket.
- Quiet operation.
- Robust design of the closure system.
- Stainless steel spring to allow frequent opening/closing.
- Maintenance: the guide can be easily removed.
- Option: 2 threaded 1/2" bosses for bypass, control, or drainage.
- Cable gland for submersible pump up to Ø100.



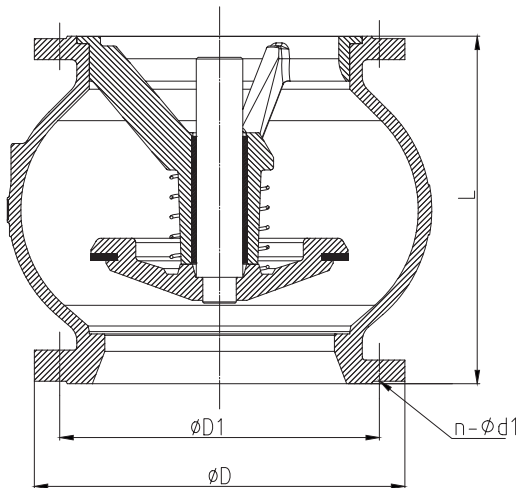
# AXIAL GUIDED CHECK VALVES (SILENT CHECK VALVE) - C300

## NOMENCLATURE



N°	Designation	Qty	Materials
1	Body	1	Cast iron EN-GJL 250 / GG25
2	Guide	1	Cast iron EN-GJL 250 / GG25
3	Disc	1	Cast iron EN-GJL 250 / GG25
4	Sleeve	1	Brass
5	Stem	1	Stainless steel/CF8
6	Sealing	1	EPDM
7	Spring	1	Stainless steel/CF8

## DIMENSIONS



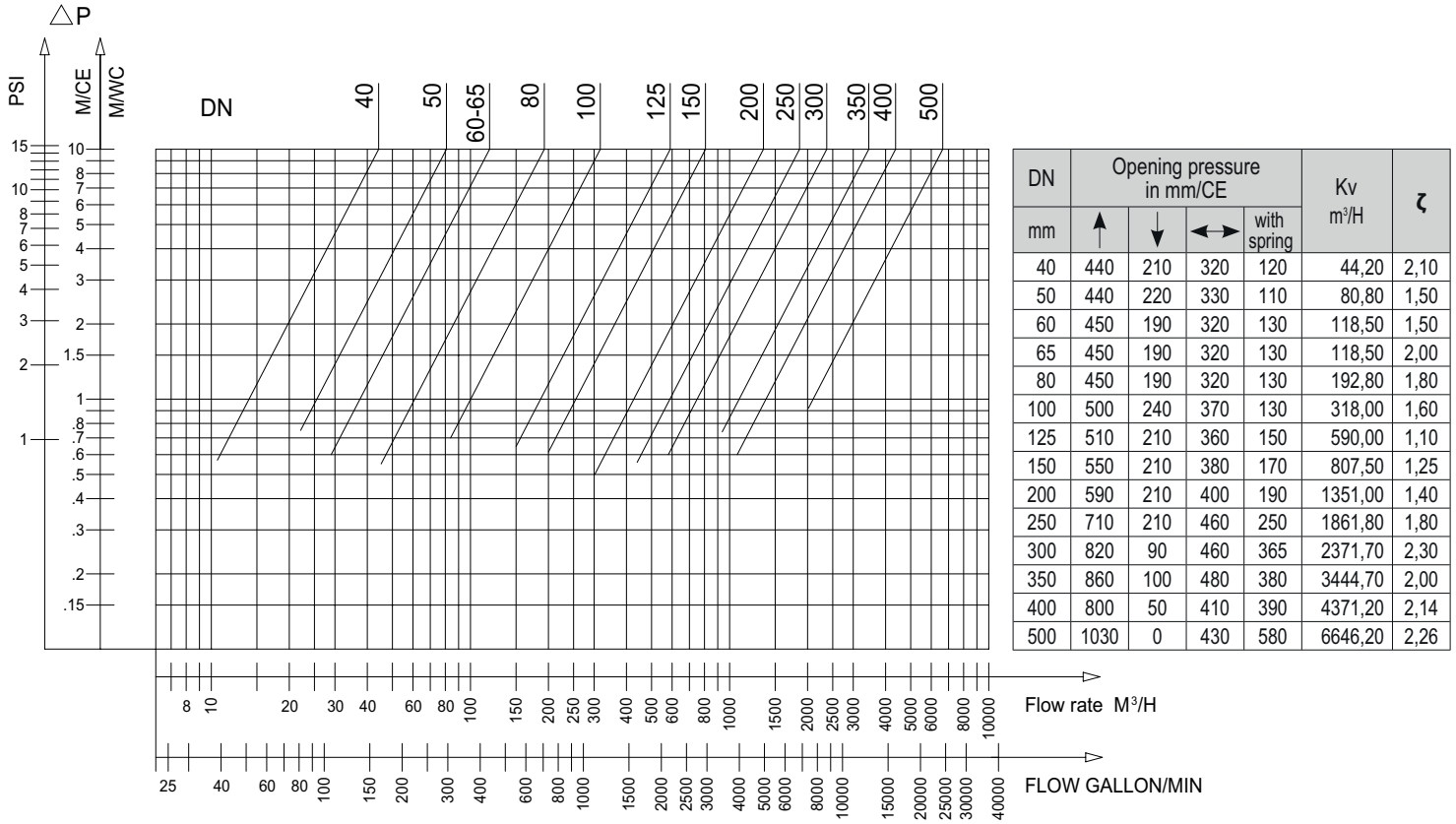
DN mm	DN inch	PN	PFA bar	Weight kg
40	1"1/2	10/16	16	4,8
50	2"	10/16	16	4,8
65	2"1/2	10/16	16	6,8
80	3"	10/16	16	8,3
100	4"	10/16	16	11,8
125	5"	10/16	16	17,2
150	6"	10/16	16	24,4
200	8"	10	10	41,6
250	10"	10	10	71,2
300	12"	10	10	86,3
350	14"	10	10	

DN mm	L	D	D1	N-d
40	85	150	110	
50	100	165	125	4-19
65	120	180	145	
80	140	200	160	
100	170	220	180	8-19
125	200	250	210	
150	230	285	240	8-23
200	289	340	295	12-23
250	354	405	355	12-28
300	396	460	410	
350	473	520	470	16-28



# AXIAL GUIDED CHECK VALVES (SILENT CHECK VALVE) - C300

## HEADLOSS



Omeax SAS

contact@omeax.com - <http://www.omeax.com>



The descriptions and photographs contained in this product specification sheet are supplied by way of information only and are not binding. Omeax reserves the right to carry out any technical and design improvements to its products without prior notice.